

LAST MINUTE CHECK LIST

GET YOUR HOUSE IN ORDER

WHAT TO WEAR?

Wash and iron before Shabbat comes in.

A SWITCH IN TIME

Time-switches are the way to go on Shabbat, to ensure hot trays, lamps, heaters, go on and off when you want them to.

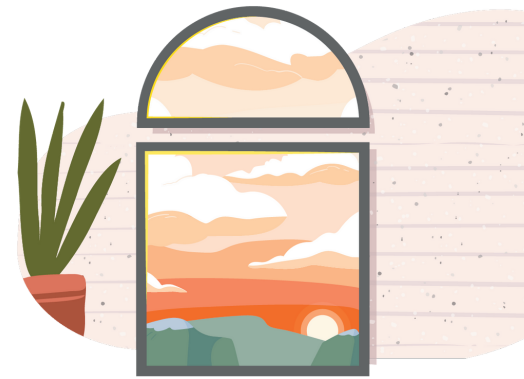
LIGHTS ON

If you have a time-switch on your DB board, set it on Friday afternoon to turn the lights on and off at suitable times. If not,

leave the lights on where you need them (communal rooms and bathrooms) and off where you don't (bedrooms).

LIGHTS OUT

Deactivate the light in your fridge by taping down the switch or removing the light bulb, so that it remains off over Shabbat, even when the fridge is opened.



- Everyone bathed and showered
- Lights on and/or off as required
- You can fill up an urn before Shabbat, or if you're really brave, go coffee/tea free
- Heat up all your food for Friday night before Shabbat starts, then turn off your oven so the food will stay warm until dinner time, or place it on a hot tray. If you want hot food on Shabbat day you can warm it up on a hot tray; make sure that the food is fully cooked with no liquids.
- The hot tray should be turned on before Shabbat or set to turn on by a time-switch which was set before Shabbat.
- Turn off alarm clocks and reminders that will not be needed on Shabbat (because you can't turn them off on Shabbat)
- Time-switches activated if you have them on your lights, stove, heaters or fans

SHABBAT PREP AND THE SAGES OF THE TALMUD

Talmud Shabbos, 119a

R' Abahu would sit on a stool of ivory and fan the fire (used to cook for the Sabbath).

Rav Anan would put on a black smock (on Fridays to demonstrate that this was not a day for keeping clean and neat but rather for cooking food for the Sabbath).

Rav Safra would sing the head (of the animal being prepared for the Sabbath meal).

Rava would salt the shibbuta (fish for the Sabbath meal).

Rav Huna would light lamps (for the Sabbath).

Rav Pappa would twine the wicks (for the lamps).

Rav Chisda would mince the beets.

Rabbah and Rav Yosef would split wood. R' Zeira would kindle (the fire).

**The
Shabbat
Project**

KEEPING IT TOGETHER